

Northern Lights Electronic Design, LLC – NLED Aurora Protocol Manual – v.2i

Please also read the NLED Aurora Control Manual for definitions and more info.

This document covers the NLED command protocol. These commands can be issued to compatible NLED controllers and devices to initiate functions. These functions include things like Sequence Change, Color Swap, Device Identification, and more. Native USB devices will accept commands over emulated USB serial port, the USB serial port can be accessed by any software or language that can access standards serial ports. Such as serial terminals, Processing, C languages, .NET, Java, etc. Some USB controllers offer the “Dual Command mode” hardware configuration, that allows the controller to accept commands over it's UART from devices such as an FTDI, ESP8266, X-Bee, or other serial based transceiver at any baud rate, but always 8-N-1.

Sending Commands to a NLED Device: Contact Support@NLEDshop.com for assistance.

NOTE: Command requests are sent and received as ASCII characters. The command and data bytes are sent as numbers(8-bit).

To Request a Command:

Host Sends (ASCII Characters):	“NLED11”	As Hex: 0x4E -> 0x4C -> 0x45 -> 0x44 -> 0x31 -> 0x31
Device Responds(ASCII Characters):	“a9”	As Hex: 0x61 -> 0x39 As Decimal: 97 -> 57
Host Sends(ASCII Characters):	“nled99”	As Hex: 0x6E -> 0x6C -> 0x65 -> 0x64 -> 0x39 -> 0x39
Device Responds(ASCII Characters):	“f0”	As Hex: 0x66 -> 0x30 As Decimal: 102 -> 48

The device is now ready to receive the command.

To Send a Command Once Request is Acknowledged:

Host Sends(As Numbers): Command ID(Byte) → Data1(Byte) → Data2(Byte) → Data3(Byte) → Data4(Byte)

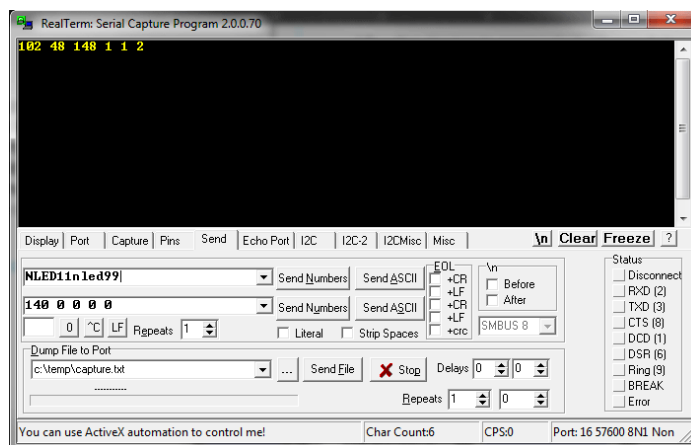
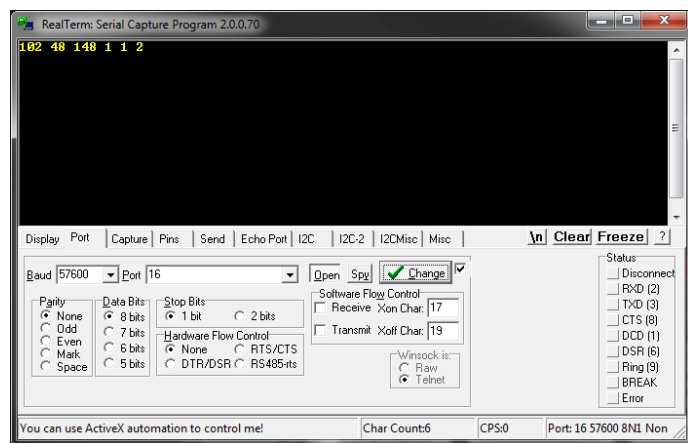
Command Reception Acknowledge:

After the device receives the command it will respond

As ASCII characters “cmd” then as numbers: 0 -> Issued Command ID Number

If the issued command was an invalid ID number the device will respond as ASCII “ERR”

Sample code with command examples can be found at: <https://github.com/NLED/aurora-interface-example>



Optional Manual Serial Terminal Command Issuing:

1. Open your serial terminal software of choice.
2. Open the device's serial port(or FTDI or similar serial port), USB devices accept any baud rate. Serial devices require the correct baud rate to be selected. Other settings are usually default, 8-N-1
3. Prepare the command request string. Waiting for the device responses is not necessary. Sending “NLED11nled99” as ASCII characters is acceptable to request a command.
4. The device will respond as ASCII “a9” & “f0”, the device is now waiting for the command bytes.
5. Send as Numbers the: Command ID followed by 4 data bytes. See later pages for command ID and data values.

List of Available Commands:

Some command names have been altered since the previous command manual was published.

Command Name:	Command ID:	
Data Dump	3	
Get Device Connection	4	
Set Pixel Packet Clone Value	10	
Set Device Output Dimming	15	
Set Bulk Live Control - Hold Outputs	60	
Set Bulk Live Control, Blank Outputs	61	
Set Single Channel Live Control With Value	62	
Set Single Channel Live Control Release	63	
Release All Live Control Channels	64	
Set Dot Correction Upload	65	
Get Channel Values	69	
Set Speed To Value	70	
Speed Decrease by 1 or Value	71	
Speed Increase by 1 or Value	72	
Toggle Pause Device	75	
Toggle Device On/Off	76	
Set Color Reorder	81	
Set Frame Stepping	82	
Set Fade Control Value	85	
Select Sequence by ID Number	90	
Sequence Down	91	
Sequence Up	92	
Set Hardware Preview Sequence Upload	99	
Set Full Sequence and Index Upload	100	
Enable Serial Pass Through	110	- NOT DOCUMENTED
Set Device Configurations	101	
Set Gamma Correction Upload	102	
Get Device Configurations	120	
Reset to Default Configurations Options	121	
Set Device Bootloader Mode	140	
External Device Bootloader Mode	141	
Sync Pulse Reception/Slave	200	

The following pages describe each command, the commands are in order of their ID#

Command Name: Data Dump

Command Type: NONE

Description: Not for use by user. Do not issue.

Usage: Not Defined

Command ID: 3

Data Byte 1: Not Defined

Data Byte 2: Not Defined

Data Byte 3: Not Defined

Data Byte 4: Not Defined

Command Name: Get Device Connection

Command Type: GET

Description:

Controller responds with its hardware/firmware details

Usage:

Responds with, HardwareID → Firmware Version → Firmware Revision -> Bootloader HardwareID -> Bootloader Version -> UserID Number

Command ID: 4

Data Byte 1: Not Defined

Data Byte 2: Not Defined

Data Byte 3: Not Defined

Data Byte 4: Not Defined

Command Name: Set Pixel Packet Clone Value**Command Type: SET****Description:**

For pixel controllers only, allows the packet clone feature to be started by commands. Does not save to memory.

Usage:

Only enabled on pixel controllers, sets packet clone value, could be overwritten by sequences changes, including linked sequence changes. Does not save.

Command ID: 10

Data Byte 1: Packet Clone Value(1-255), 0 = off

Data Byte 2: 0

Data Byte 3: 0

Data Byte 4: 0

Command Name: Set Device Output Dimming**Command Type: SET****Description:**

Indicates to the controller to apply intensity control to all outputs, with the option to use the intensity temporarily or to save it, once saved it will be applied to all compatible modes, including stand-alone.

Usage:

Data1 indicates the intensity to apply to all the outputs. Not available on all devices.

Command ID: 15

Data Byte 1: 0 - 255 (equates to 0% - 100%)

Data Byte 2: 0 = temporary, 1 = Save Value

Data Byte 3: 0

Data Byte 4: 0

Command Name: Set Bulk Live Control - Hold Outputs

Command Type: SET

Description:

Starts direct live control of the outputs using bulk method. Once the command is initiated it the outputs will hold their values until updated with a full packet of bytes equal to Channel Amount

Usage:

Once Initiated, send Channel Amount of bytes. Latches sent data values to outputs once Channel Amount has been received.

Command ID: 60

Data Byte 1: 1 for on, 0 for off

Data Byte 2: 1 for 16-bit Mode, 0 or any for 8-bit mode

Data Byte 3: Channel Amount MSB

Data Byte 4: Channel Amount LSB

Command Name: Set Bulk Live Control, Blank Outputs

Command Type: SET

Description:

Sets to Live Control mode and blanks(set to %0) the Outputs upon issuing the command.

Usage:

Blanks(0%) all outputs, optional enter Bulk Live Control mode or Stall/Pause

Command ID: 61

Data Byte 1: 1 for Bulk Live Control, 0 for Stall/Pause

Data Byte 2: 0

Data Byte 3: 0

Data Byte 4: 0

Command Name: Set Single Channel Live Control With Value
Command Type: SET

Description:

Sets a single channel to live control mode and specifies the output value. Can be used concurrently with stand-alone color sequences.

Usage:

Sets a single output channel to the specified value, puts it into per channel live control mode if not already.

Command ID: 62

Data Byte 1: ChanMSB

Data Byte 2: ChanLSB

Data Byte 3: ValueMSB

Data Byte 4: ValueLSB

Command Name: Set Single Channel Live Control Release
Command Type: SET

Description:

Releases a single channel from live control mode back to default/stand-alone usage. Can be used concurrently with stand-alone color sequences.

Usage:

Releases a single output channel from per channel live control.

Command ID: 63

Data Byte 1: ChanMSB

Data Byte 2: ChanLSB

Data Byte 3: 0

Data Byte 4: 0

Command Name: Release All Live Control Channels**Command Type: SET****Description:**

Releases all output channels from live control mode. Returning them to default usage.

Usage:

Releases all channels from per sequence live control.

Command ID: 64

Data Byte 1: 0

Data Byte 2: 0

Data Byte 3: 0

Data Byte 4: 0

Command Name: Set Dot Correction Upload**Command Type: SET****Description:**

For Compatible Controllers, see hardware info for details

Usage:

Send bytes equal to channel amount, values 0 – 63

Command ID: 65

Data Byte 1: 0

Data Byte 2: 0

Data Byte 3: 0

Data Byte 4: 0

Command Name: Get Channel Values**Command Type: SET****Description:**

Returns the output channel value(s), either a range or a single channel value. Max 255 bytes can be reported, if more are requested 0 will be returned. Returns 8-bit or 16-bit MSB first numbers

Usage:

Will report all channel values from ChannelNumber to MaxChanNumber, 0's in Data3 & Data4 will report back a single value indicated by ChannelNumber MSB & LSB

Command ID: 69

Data Byte 1: ChannelNumber MSB

Data Byte 2: ChannelNumber LSB

Data Byte 3: MaxChanNumber MSB

Data Byte 4: MaxChanNumber LSB

Command Name: Set Speed To Value**Command Type: SET****Description:**

Alters the Speed for current stand-alone sequence Sent as Unsigned Integer.

Usage:

Send an unsigned integer(0 to 65,535) to set the Speed for stand-alone sequences. Does not save, a sequence change or power cycle will revert the change.

Command ID: 70

Data Byte 1: Speed MSB

Data Byte 2: Speed LSB

Data Byte 3: 0

Data Byte 4: 0

Command Name: Speed Decrease by 1 or Value**Command Type: SET****Description:**

Decrease the Speed by a single value, or up to 255. Affects current stand-alone sequence, does not save.

Usage:

If Data1 is 0, it will subtract 1 from the speed, if its 1-255 it will subtract that value

Command ID: 71**Data Byte 1:** 0 = Subtract 1, Or Subtract 1-255**Data Byte 2:** 0**Data Byte 3:** 0**Data Byte 4:** 0

Command Name: Speed Increase by 1 or Value**Command Type: SET****Description:**

Increase the Speed by a single value, or up to 255. Affects current stand-alone sequence, does not save.

Usage:

If Data1 is 0, it will add 1 to the speed, if its 1-255 it will add that value.

Command ID: 72**Data Byte 1:** 0 = Add 1, Or Add 1-255**Data Byte 2:** 0**Data Byte 3:** 0**Data Byte 4:** 0

Command Name: Toggle Pause Device**Command Type: SET****Description:**

Toggles device pausing of the current stand-alone sequence, with optional fade down to 0%

Usage:

Each command issued toggles Pause state with options.

Note: Setting the Pause with Fade down will not continue the sequence correctly after un-pausing.

Command ID: 75

Data Byte 1: 0 to toggle, 1 to pause, 2 to play

Data Byte 2: 1 = Fade Down all outputs to 0%, 0 = None Fade Down

Data Byte 3: Fade Down Speed MSB - Lower is faster

Data Byte 4: Fade Down Speed LSB - Lower is faster

Command Name: Toggle Output On/Off**Command Type: SET****Description:****Usage:**

Send Data Byte 1 as '0' to enable the outputs for normal usage, restores the previous color sequence when issued. Send Data Byte 1 as '1' to disable the outputs and clear them(turn the outputs off. Send Data Byte 1 as any other number to toggle enable/disable outputs.

Command ID: 76

Data Byte 1: 0 = Toggle Enable/Disable, 1 = Enable Outputs, 2 = Disable Outputs

Data Byte 2: 0

Data Byte 3: 0

Data Byte 4: 0

Command Name: Set Color Reorder

Command Type: SET

Description:

Swaps the colors based on 6 methods(including unaltered) See documentation for details. Data 2 should be 0 to run the function, or to reset Color Swap send anything but 0 in Data 2. Not available on all controllers, pixel controllers support this command.

Usage:

Send 0 to increment Color Swap Mode, or send 1 – 6 to set the mode, See image below for details.

Command ID: 81








Data Byte 1: 0 - 6, see image for ID number

Data Byte 2: 0

Data Byte 3: 0

Data Byte 4: 0

NLED Aurora Control v.2a Color Swap Methods: By ID#

0: RGB	
1: BRG	
2: GBR	
3: RBG	
4: BGR	
5: GRB	
6: GRBW	

www.NLEDshop.com/nledaurora

Command Name: Set Frame Stepping

Command Type: SET

Description:

Allows commands to step through a sequence's frames one by one, either forwards or backwards each time the command is issued. When first issues the device will Pause on the current frame. The displayed frame does not change until the sequence is changed or another command is received.

Usage:

Run CMD: 90 to load a sequence by ID number, or otherwise select a sequence. 'Instant', 'POV', or 'File' sequence modes are compatible. Then issue this command to step the output colors frame by frame.

Command ID: 82

Data Byte 1: 1 for Forward, 0 for Backward

Data Byte 2: 0

Data Byte 3: 0

Data Byte 4: 0

Command Name: Set Fade Control Value**Command Type: SET****Description:**

Stalls a Fade sequence and waits for command to allow it to cycle a the color values x amount of times. Variable should be a unsigned integer. Sending 200 will let each channel cycle normally 200 times. It takes 255 x (Amount Of Frames) for a full rotation of the setting's colors. No Linked sequences are supported.

Usage:

First run CMD: 90, to load the a sequence by ID number, or otherwise select a sequence. 'Fade', 'Gradient', sequence modes are compatible. Then Pause the sequence using command CMD: 75. Then issue this command when required to fade the sequence forwards a defined amount of steps. After the device cycles the specified steps it will pause and hold the current output colors.

Command ID: 85

Data Byte 1: Steps Amount MSB

Data Byte 2: Steps Amount LSB

Data Byte 3: 0

Data Byte 4: 0

Command Name: Select Sequence by ID Number**Command Type: SET****Description:**

Selects a stand-alone Sequence by ID number. The ID number is the the sequence's position in the Index.

Usage:

Loads a sequence by ID indexed ID number, with mode. Start playing or start paused. Data2 with a value of 1 will start the Idle Sequence, otherwise send 0.

Command ID: 90

Data Byte 1: Sequence Number(0-255, base zero, means #0 is the first sequence)

Data Byte 2: 0 = Ignore, 1 = Idle Sequence

Data Byte 3: 1 for Pause, 0 for play

Data Byte 4: 0

Command Name: Sequence Down**Command Type: SET****Description:**

Decrements Sequence number, as if the button was pressed. The device will then start playing the previous sequence in the index, wrapping to the beginning if required.

Usage:

Send command, instantly changes sequence, saves to memory.

Command ID: 91

Data Byte 1: 0

Data Byte 2: 0

Data Byte 3: 0

Data Byte 4: 0

Command Name: Sequence Up**Command Type: SET****Description:**

Increments Sequence number, as if the button was pressed. The device will then start playing the next sequence in the index.

Usage:

Send command, instantly changes sequence, saves to memory.

Command ID: 92

Data Byte 1: 0

Data Byte 2: 0

Data Byte 3: 0

Data Byte 4: 0

Command Name: Set Hardware Preview Sequence Upload

Command Type: SET

Description:

Uploads a single sequence to the controller for Hardware Previewing.

Usage:

Not for user, details proprietary.

Command ID: 99

Data Byte 1: 0

Data Byte 2: 0

Data Byte 3: 0

Data Byte 4: 0

Command Name: Set Full Sequence and Index Upload

Command Type: SET

Description:

Uploads the index and all indexed color sequences and their values.

Usage:

Not for user, details proprietary.

Command ID: 100

Data Byte 1: 0

Data Byte 2: 0

Data Byte 3: 0

Data Byte 4: 0

Command Name: Set Device Configurations

Command Type: SET

Description:

Uploads the user selected configuration settings from NLED Aurora Control or other software. These configuration settings are specific to the device.

Usage:

Not for user, details proprietary.

Command ID: 101

Data Byte 1: 0

Data Byte 2: 0

Data Byte 3: 0

Data Byte 4: 0

Command Name: Set Gamma Correction Upload

Command Type: SET

Description:

Uploads the optional Gamma Correction table values. Not available on all devices.

Usage:

Depends on controller, contact for assistance. More details released in the future.

Command ID: 102

Data Byte 1: 0

Data Byte 2: 0

Data Byte 3: 0

Data Byte 4: 0

Command Name: Get Device Configurations

Command Type: GET

Description:

Gets the controller's current configuration settings. Values the device sends back are specific to the device. More info available in the future.

Usage:

Responds with the devices configuration flags and variables.

Command ID: 120

Data Byte 1: 0

Data Byte 2: 0

Data Byte 3: 0

Data Byte 4: 0

Command Name: Reset to Default Configurations Settings

Command Type: SET

Description:

Resets configuration bits and most configuration bytes to default or 0. This will remove any configuration settings the user has applied to the device.

Usage:

Instantly updates the device's configurations flags and bytes to default as specified by the device's firmware.

Command ID: 121

Data Byte 1: 0

Data Byte 2: 0

Data Byte 3: 0

Data Byte 4: 0

Command Name: Set Device Bootloader Mode

Command Type: SET

Description:

Enters device into bootloader mode, will need to close serial/USB port connection and open the separate bootloader software. Note: After bootloading some devices may re-enter bootloader mode when reset, if your device keeps entering bootloader mode after bootloading new firmware, power cycle the device.

Usage:

Immediately after issuing command the controller will enter bootloader mode. USB connection will be dropped or stalled. And a USB HID device should be started.

Command ID: 140

Data Byte 1: 0

Data Byte 2: 0

Data Byte 3: 0

Data Byte 4: 0

Command Name: External Device Bootloader Mode

Command Type: SET

Description:

For compatible devices with onboard modules or secondary microcontrollers. This command enters the device into transparent bridge serial mode which allows other devices to be bootloaded through the USB connection. Used for ESP WiFi modules, more function to be added in the future.

Usage:

After issuing the command the Aurora device will enter a bridge mode. Disconnect from the Aurora USB port and open the third-party bootloading software for the external device. Such as NodeMCU flasher. Set it up and begin the flashing process. Once complete unplug the controller's USB port, and

Command ID: 141

Data Byte 1: 0

Data Byte 2: 0

Data Byte 3: 0

Data Byte 4: 0

Command Name: Sync Pulse Reception/Slave

Command Type: SET

Description:

Used for syncing multiple controllers together. One controller is the master that can be connected to multiple slaves. Slave devices receives the sync command will immediately set the color sequence to the received ID# and sets the frame number. The actual color data is not sent from the master to the slave, all the connected controllers must have the color sequences in memory and indexed the same. They don't need to be the same color sequences, they could be different color sequences, or could be a part of a larger amount of pixels. Such as synchronizing two of the same LED screens that are too large for a single controller. Or dividing a large screen into smaller sections and controlling each section with a single controller.

Usage:

Set one controller as a Sync Master, create, index and load the color sequences into memory. Set one or more controllers as a Sync Slave, create, index, and load the color sequences into memory. Connect the controller's together as described in their datasheets.

Command ID: 200

Data Byte 1: Sequence ID Number

Data Byte 2: 0 - No Usage

Data Byte 3: Frame Number MSB

Data Byte 4: Frame Number LSB

Contact Support@NLEDshop.com for assistance.