

Pixel Controller Micro - Command Mode

Command Mode

Command mode allows the configurations to be adjusted via a USB to serial adapter over the TTL serial header GND-TX-RX. See user inputs in how to enter the device into Command Mode.

For configuring not through the software, the protocol is simple. The baud rate is 19,200 at 8-N-1. Once entered into command mode, send the data as numbers, the LED will toggle states with each byte. Do as follows:

Send as numbers: 123 -> 253 -> 82 -> 7

That unlocks locks the function and frames the data.

Then Send the configuration bytes, as numbers: Chipset ID# -> User Pixel Amount -> ConfigFlags
Once it has received those 7 bytes, it will start to blink steadily, power off the controller, set your DIP switches, and power the controller back up. Note: See configurations page for byte info.

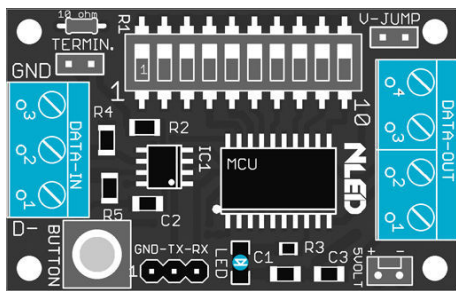


Fig. 4c

RX-TX-GND Header Connection

Device:

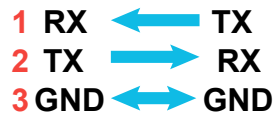


Fig. 5b

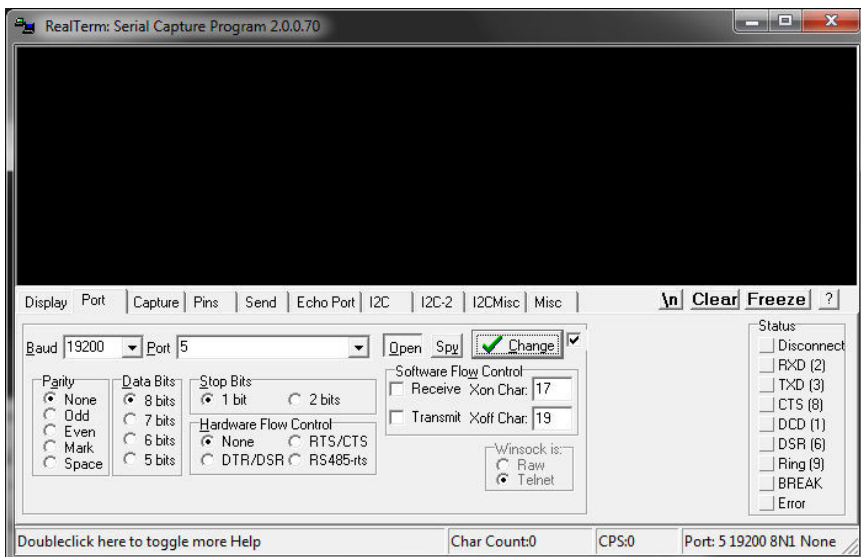
Chipset ID#:

- 0 - WS2811/WS2812/SK6812
- 2 - WS2801
- 4 - LPD8806
- 6 - LPD6803
- 8 - APA102

Controller RX supports both 3.3 volt and 5 volt logic levels, TX outputs at 5 volt logic level.
Level translation is not required.

User Pixel Amount: 1 - 255

(Shown is RealTerm, but any serial terminal software will work)



Configuration Byte Bit Order(ConfigFlags):

- LSB - Bit0 - Indicator LED Enable
- Bit1 - DMX Decoder, Force Full Packets
- Bit2 - Enable Serial Color Swap
- Bit3 - GRB Color Order
- Bit4 - GRBW Color Order
- Bit5 - BGR Color Order
- Bit6 - BRG Color Order

MSB - Bit7 - Force Decoder Mode

Note: Do not set more than one color order at a time.

Default ConfigFlags is 0x01, 00000001

